



# MAJESTIC METALS

A Metal Roof and Wall Panel Fabricator

## Standard Finishes

---



Matte Black



Charcoal Gray



Musket Gray



Slate Gray



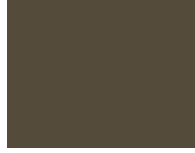
Ash Gray



Cityscape



Extra Dark Bronze



Medium Bronze



Mansard Brown



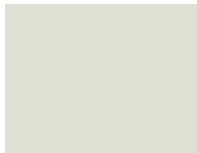
Burnished Slate



Dark Bronze



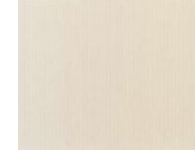
Classic Green



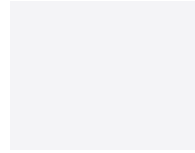
Sandstone



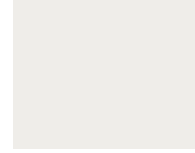
Sierra Tan



Almond



Bright White



Bone White



Hemlock Green



Regal Red



Colonial Red



Terra Cotta



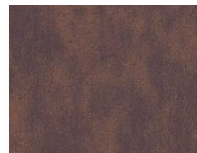
Slate Blue



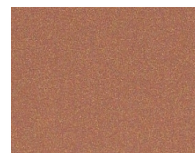
Royal Blue



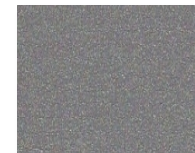
Galvalume Plus



\* Western Rust



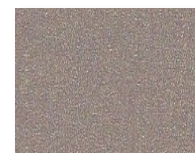
\*Copper Penny



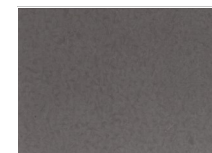
\*Weathered Zinc



\* Silver



\* Champagne



\* Vintage

---

Cool coating with premium heat - reflective technology from Dura Coat.  
PVDF HYLAR 5000® Pre - Finished Steel & Aluminum Flat Sheets & Coil.  
**22 and 26 gauge** material available on select materials. Inquire with your  
Majestic Metals Representative

\*Premium Color

# Stock Availability Matrix

| Color Name               | Hot Dipped Galvanized / Galvalume |       |     |        |     |        |     |        |     |           |     |        |
|--------------------------|-----------------------------------|-------|-----|--------|-----|--------|-----|--------|-----|-----------|-----|--------|
|                          | ULTRA-COOL RATINGS                |       |     | 22 ga. |     | 24 ga. |     | 26 ga. |     | 26 ga. 3D |     | 28 ga. |
|                          | Reflect                           | Emiss | SRI | 48"    | 40" | 48"    | 40" | 48"    | 40" | 48"       | 42" |        |
| Acrylic Coated Galvalume | N/A                               | N/A   | N/A | •      | •   | •      | •   | •      |     |           | •   |        |
| Aged Copper              | 26.8%                             | 0.85  | 26  |        | •   | •      |     |        |     |           |     |        |
| Almond                   | 61.4%                             | 0.83  | 72  | •      | •   | •      |     | •      |     |           | •   |        |
| Antique Ivory            | N/A                               | N/A   | N/A |        |     |        |     | •      |     |           | •   |        |
| Ash Gray                 | 49.8%                             | 0.85  | 56  |        |     | •      |     | •      |     |           |     |        |
| Bone White               | 67.6%                             | 0.84  | 81  | •      | •   | •      |     | •      |     |           | •   |        |
| Bright White             | 67.8%                             | 0.84  | 81  |        |     | •      |     |        |     |           |     |        |
| Burgundy                 | 27.1%                             | 0.85  | 26  |        | •   | •      | •   | •      | •   | •         |     |        |
| Burnished Slate          | 25.1%                             | 0.83  | 33  |        | •   | •      | •   | •      | •   | •         |     |        |
| Champagne                | 47.2%                             | 0.80  | 51  |        |     | •      |     |        |     |           |     |        |
| Charcoal Gray            | 25.3%                             | 0.84  | 23  | •      | •   | •      | •   | •      | •   | •         | •   |        |
| Cityscape                | 45.2%                             | 0.87  | 51  |        |     | •      |     |        |     |           |     |        |
| Classic Green            | 30.5%                             | 0.85  | 30  |        | •   | •      | •   | •      | •   | •         | •   |        |
| Colonial Red             | 33.2%                             | 0.86  | 35  |        | •   | •      | •   | •      | •   | •         | •   |        |
| Copper Penny             | 43.9%                             | 0.84  | 48  |        | •   | •      |     | •      |     |           |     |        |
| Dark Bronze              | 27.7%                             | 0.85  | 27  | •      | •   | •      | •   | •      | •   | •         | •   |        |
| Deep Black               | 26.7%                             | 0.84  | 25  | •      | •   | •      | •   | •      |     |           | •   |        |
| Extra Dark Bronze        | N/A                               | N/A   | N/A |        | •   | •      |     |        |     |           |     |        |
| Hartford Green           | 27.1%                             | 0.83  | 25  | •      | •   | •      | •   | •      | •   | •         | •   |        |
| Hemlock Green            | 31.1%                             | 0.85  | 31  |        | •   | •      |     |        |     |           |     |        |
| Mansard Brown            | 26.0%                             | 0.85  | 25  | •      | •   | •      | •   | •      | •   | •         | •   |        |
| Matte Black              | 26.8%                             | 0.84  | 25  | •      | •   | •      | •   | •      | •   | •         | •   |        |
| Medium Bronze            | 30.9%                             | 0.86  | 31  | •      | •   | •      | •   | •      | •   | •         | •   |        |
| Musket Gray              | 34.8%                             | 0.83  | 35  |        | •   | •      | •   | •      | •   | •         |     |        |
| Pebble Clay              | 43.4%                             | 0.84  | 47  |        |     |        |     | •      |     |           | •   |        |
| Regal Red                | 38.5%                             | 0.85  | 41  |        |     | •      |     | •      |     |           |     |        |
| Royal Blue               | 26.8%                             | 0.85  | 26  |        | •   | •      |     | •      |     |           |     |        |
| Sandstone                | 59.7%                             | 0.82  | 69  | •      |     | •      |     |        |     |           |     |        |
| Sierra Tan               | 45.8%                             | 0.83  | 50  | •      | •   | •      |     | •      | •   | •         | •   |        |
| Silver                   | 55.6%                             | 0.81  | 63  |        | •   | •      |     |        |     |           |     |        |
| Slate Blue               | 32.8%                             | 0.84  | 33  |        | •   | •      |     | •      |     |           | •   |        |
| Slate Gray               | 37.5%                             | 0.82  | 38  | •      | •   | •      | •   | •      | •   | •         | •   |        |
| Stone White              | 65.6%                             | 0.82  | 77  |        |     | •      |     |        |     |           |     |        |
| Teal                     | 27.9%                             | 0.85  | 27  |        | •   | •      |     |        |     |           |     |        |
| Terra Cotta              | 41.9%                             | 0.83  | 45  |        |     | •      |     | •      | •   | •         |     |        |
| Vintage                  | 30.0%                             | 0.70  | 22  |        | •   | •      |     |        |     |           |     |        |
| Weathered Zinc           | 38.3%                             | 0.85  | 41  |        | •   | •      |     |        |     |           |     |        |
| Western Rust             | 24.0%                             | 0.87  | 23  |        | •   | •      |     |        |     |           |     |        |

Oil canning is an inherent part of light gauge cold formed metal products and is not cause for coil, sheet or panel rejection. Protective film must be removed immediately after installation. Colors and sizes can change without notice. Additional sizes may be available, please contact your sales representative. Please contact our office for maintenance and cleaning procedures.

### Product Description

Ultra-Clad pre-finished metal features Dura Coat Durapon 70% full strength PVDF paint finishes formulated with Cool technology. This high performance product provides the ultimate in resistance against fading and weathering. In addition to our standard colors, custom colors are also available up request.

### Color Samples

Colors shown represent the actual colors as accurate as modern printing technology will permit. Colors represented on electronic charts may not match actual material. All colors should be verified using actual metal samples. Mismatch of electronic color representation and actual material shall not be accepted as a cause for rejection. Free metal samples are available upon request.



HYLAR 5000 is a registered trademark of Ausimont USA, Inc.  
GALVALUME is registered trademark of BIEC.